

## Monthly Weather Summary in Thailand November 2014

The rather active high pressure area from China periodically extended to cover upper Thailand especially during the second half of the month. At that time, cool weather occurred across the northern and northeastern parts with cold weather in some areas including the mountainous areas and mountain top. Mean monthly temperatures were 1-2 °C higher than normal especially in upper Thailand. The tropical depression in the Bay of Bengal and the low pressure cell covering the coastal areas of Myanmar brought unusual rainfall to upper Thailand during early month. Moreover, the prevailing of the easterly wind and the remnant of the tropical storm "SINLAKU" (1421) over Cambodia resulted in more rainfall during late month. Besides, southern Thailand received plentiful of rain especially along the east coast with flash flooding in some places during mid-month caused by the northeast monsoon and the low pressure cell covering over the Gulf of Thailand and southern Thailand during early and mid-month. Monthly rainfall was above normal in most parts of Thailand i.e. northern part 15.4 mm (47%), central 17.6 mm (47%), eastern 36.3 mm (68%) and southern part (west coast) 60.6 mm (31%) except for that in northeastern and southern parts (east coast) were below normal 0.7 mm (4%) and 48.2 mm (13%), respectively.

**1 – 10 November:** The ridge of high pressure area from China extended to cover upper Thailand caused decreasing in temperature with cool weather in many areas of the northern and northeastern parts while cool weather was found for few days in the rest parts. . The lowest minimum temperature was 18.4 °C at Umphang in Tak province on November 4 and 9.3 °C over the area of mountaintop at Doi Inthanon in Chiang Mai on November 10. For rainfall, due to the influence of the active low pressure cell covering the Bay of Bengal on November 5 which later intensified into the tropical cyclone resulted in abundant rainfall in upper Thailand especially in the northern part obtained widespread rain with heavy to very heavy rainfall in some areas during mid-period whereas plentiful of rain was found in the central and eastern parts nearly the whole period. The maximum daily rainfall of 125.0 mm at Wichian Buri in Phetchabun province on November 7. With the covering of active low pressure cell over the southern part and the Gulf of Thailand during early period and the active low pressure cell over the lower Gulf of Thailand during late period, it induced abundant rainfall in southern Thailand especially along the east coast where heavy to very heavy rainfall was found in several areas during the second half of the period. The highest amount of rainfall was 225.2 mm at Jan Di Rubber Research Station in Nakhon Si Thammarat province on November 8. Flood occurred at Nakhon Si Thammarat province on November 7 and at Chumphon province on November 8. Gusty wind occurred at Phattalung on November 8 and at Krabi province on November 9.

**11 – 20 November:** The another ridge of rather active high pressure area extending to cover upper Thailand during the middle and the end of the period coupled with the active northeast monsoon prevailing over the Gulf of Thailand and southern part during the second half of the period. Consequently, temperature relatively decreased and generally cool weather was found in the northern and northeastern parts with cold weather in some areas of the northeastern part while cool weather was observed nearly the whole areas of the central and eastern parts during late period. The lowest minimum temperature was 14.9 °C at Agrometeorological station in Nakhon Phanom province on November 19 and 8.4 °C over the area of mountaintop at Doi Inthanon in Chiang Mai on November 13. For rainfall, scanty rainfall was observed in upper Thailand with the maximum daily rainfall of 9.3 mm at Mae Chaem in Chiang Mai province on November 17. In southern part, abundant rainfall with heavy to very heavy rainfall was observed from Chumphon province southward mainly along the east coast with the highest daily rainfall of 193.5 millimeter at Rue So in Narathiwat province on November 18. Flash flooding occurred at Phattalung and Krabi provinces on November 19 with flooding at Songkhla province on November 20.

**21 – 30 November:** The rather active high pressure area continued to cover upper Thailand during the first half of the period and later weakened as well as the northeast monsoon prevailing over The Gulf of Thailand and southern part was weak. These caused temperature relatively increased in upper Thailand during the second half of the period except for in the northern part where generally cool weather was observed with cold weather in some areas and cold to very cold weather was found in the area of mountaintop. The minimum temperature of 12.0 °C was recorded at Amphoe Mueang in Mae Hong Son province on November 28 and it dropped to 3.0 °C at Doi Ang Khang, Fang in Chiang Mai province on November 30. Frost occurred at Doi Inthanon, Amphoe Chom Thong in Chiang Mai province on November 22 and at Mae Cham in Chiang Rai province on November 28 as well. For rainfall, with the effect of the prevailing of the easterly wind over lower northeastern, lower central and eastern parts during November 26 and 27 coupled with the tropical storm (SINLAKU 1421) in the middle of the South China Sea making landfall over Na Trang, Vietnam at 04.00 a.m. on November 30 before dissipating over Cambodia in the evening on the same day. It induced unseasonably rainfall in lower northeastern, central and eastern parts during the second half of the period with the maximum daily rainfall of 96.4 millimeter at Sattahip in Chonburi province on November 30. In southern part, rainfall persisted in many areas but it was relatively decreased, the highest daily rainfall was 160.0 millimeter at Khao Chaison in Phatthalung province on November 24.

---

**Note :**

- 1) Rainfall, temperatures and natural disasters in this report were updated up to December 1, 2014.
- 2) SINLAKU mean Kosrae legendary goddess contributes by Micronesia.

Climatological Center  
Meteorological Development Bureau  
Meteorological Department

Monthly Current Report  
Rainfall and Accumulative Rainfall  
November 2014

Northern Thailand

Station	Temperature ( °c)		Rainfall (mm)		Accumulative rainfall (mm) Since 1 January	
	Mean	Above or below normal	Actual	Above or below normal	Actual	Above or below normal
Chiang Rai	24.1	1.9	64.3	5.1	1626.7	-49.8
Mae Hong Son	24.3	0.3	38.8	-6.1	1026.0	-256.0
Phayao	24.4	1.7	53.0	15.7	1169.8	43.7
Chiang Mai	25.8	1.8	16.0	-37.9	1074.9	-39.8
Tha Wang Pha	24.9	1.8	36.1	8.5	1173.6	-223.5
Nan	25.6	1.7	26.9	8.8	1090.0	-135.5
Lamphun	25.4	1.5	27.0	-17.1	788.0	-208.4
Lampang	25.2	1.0	63.9	34.4	1145.8	107.3
Mae Sariang	24.8	0.9	37.8	15.7	966.9	-161.3
Phrae	25.6	1.2	28.5	2.9	1062.4	-44.6
Uttaradit	27.1	1.2	12.8	-13.9	1336.7	-29.9
Bhumibol Dam	25.7	0.9	39.1	-5.7	878.1	-158.1
Tak	26.3	1.1	39.9	-14.7	919.7	-136.3
Mae Sot	25.6	1.2	23.8	0.1	1026.7	-435.0
Umphang	23.5	1.5	95.6	70.4	1239.3	-216.9
Phitsanulok	27.5	1.0	60.5	27.1	1329.4	23.5
Lom Sak	26.8	1.4	23.3	9.4	745.0	-293.6
Phetchabun	26.9	1.5	58.9	47.3	1215.6	90.0
Wichian Buri	27.3	1.0	174.4	154.1	1231.0	14.7
Kamphaeng Phet	26.9	1.0	46.1	4.1	1278.9	-19.0
Over the area	25.7	1.3	48.3	15.4 47%	1116.2	-106.5 -9%

Northeastern Thailand

Station	Temperature ( °c)		Rainfall (mm)		Accumulative rainfall (mm) Since 1 January	
	Mean	Above or below normal	Actual	Above or below normal	Actual	Above or below normal
Nong Khai	26.8	2.2	12.4	-2.8	1584.3	-19.6
Loei	25.1	1.5	36.2	16.2	1078.1	-154.1
Udon Thani	26.4	1.5	12.8	2.5	1374.2	-41.3
Nakhon Phanom	26.7	2.3	0.6	-9.1	2410.1	68.1
Sakon Nakhon	26.0	1.6	14.1	2.2	1700.9	61.5
Mukdahan	26.9	2.5	0.0	-13.3	1439.1	-38.3
Khon Kaen	26.7	1.7	6.9	-9.0	972.9	-269.8
Kosum Phisai	27.1	1.8	0.7	-17.4	1491.9	231.3
Roi Et	27.1	2.2	0.8	-14.4	1439.4	99.5
Chaiyaphum	27.3	1.7	23.2	4.2	804.2	-328.9
Ubon Ratchathani	27.8	2.4	0.0	-22.6	1896.8	316.1
Tha Tum	27.2	1.8	1.4	-19.6	1099.3	-287.6
Surin	27.5	2.2	94.0	65.3	1386.4	-43.9
Nakhon Ratchasima	27.5	2.1	13.9	-10.0	1048.3	-20.5
Chok Chai	27.1	2.0	78.1	48.7	953.2	-118.4
Nang Rong	26.7	1.7	6.0	-31.2	1320.8	130.3
Over the area	26.9	2.0	18.8	-0.7 -4%	1375.0	-26.0 -2%

- NOTES :
- 1) Mean temperature is the average of daily dry-bulb temperature
  - 2) "T" is trace, rainfall amount less than 0.1 mm.
  - 3) "blank" is incomplete data.
  - 4) Temperature and rainfall are preliminary data.

Monthly Current Report  
Rainfall and Accumulative Rainfa  
November 2014

Central Thailand

Station	Temperature ( °c)		Rainfall (mm)		Accumulative rainfall (mm Since 1 January	
	Mean	Above or below normal	Actual	Above or below normal	Actual	Above or below normal
Nakhon Sawan	27.8	1.3	12.5	-14.9	1071.9	-73.2
Bua Chum	27.1	1.4	15.2	-6.9	855.9	-226.9
Lop Buri	28.2	1.1	77.9	44.8	913.8	-206.8
Suphan Buri	28.1	1.3	128.9	84.8	950.5	-18.2
Thong Pha Phum	26.4	1.1	52.1	26.5	1409.6	-372.2
Kanchanaburi	28.0	1.6	56.0	-2.6	812.1	-238.1
Bangkok Airport	28.7	1.0	73.9	36.9	1255.0	-113.8
Bangkok Metropolis	29.2	1.4	22.2	-27.3	1099.1	-542.8
Over the area	27.9	1.2	54.8	17.6 47%	1046.0	-224.0 -18%

Eastern Thailand

Station	Temperature ( °c)		Rainfall (mm)		Accumulative rainfall (mm Since 1 January	
	Mean	Above or below normal	Actual	Above or below normal	Actual	Above or below normal
Prachin Buri	28.8	1.4	12.2	-19.5	1493.7	-324.6
Kabin Buri	27.6	0.9	78.5	49.4	1339.6	-253.3
Aranyaprathet	28.5	1.8	41.3	5.8	1450.2	110.2
Chon Buri	29.2	1.6	43.0	-5.8	1113.8	-176.3
Ko Sichang	28.4	1.2	28.7	-31.9	895.4	-315.0
Pattaya	27.9	1.2	114.3	42.2	877.2	-225.2
Sattahip	27.7	0.8	228.7	152.6	1206.2	-49.9
Rayong	27.8	0.6	95.6	44.8	1043.6	-333.7
Chanthaburi	28.2	1.3	78.2	23.7	2812.1	-175.3
Khlong Yai	28.2	0.9	175.2	101.6	5330.0	505.5
Over the area	28.2	1.1	89.6	36.3 68%	1756.2	-123.9 -7%

- NOTES :
- 1) Mean temperature is the average of daily dry-bulb temperature
  - 2) "T" is trace, rainfall amount less than 0.1 mm.
  - 3) "blank" is incomplete data.
  - 4) Temperature and rainfall are preliminary data.

Monthly Current Report  
Rainfall and Accumulative Rainfa  
November 2014

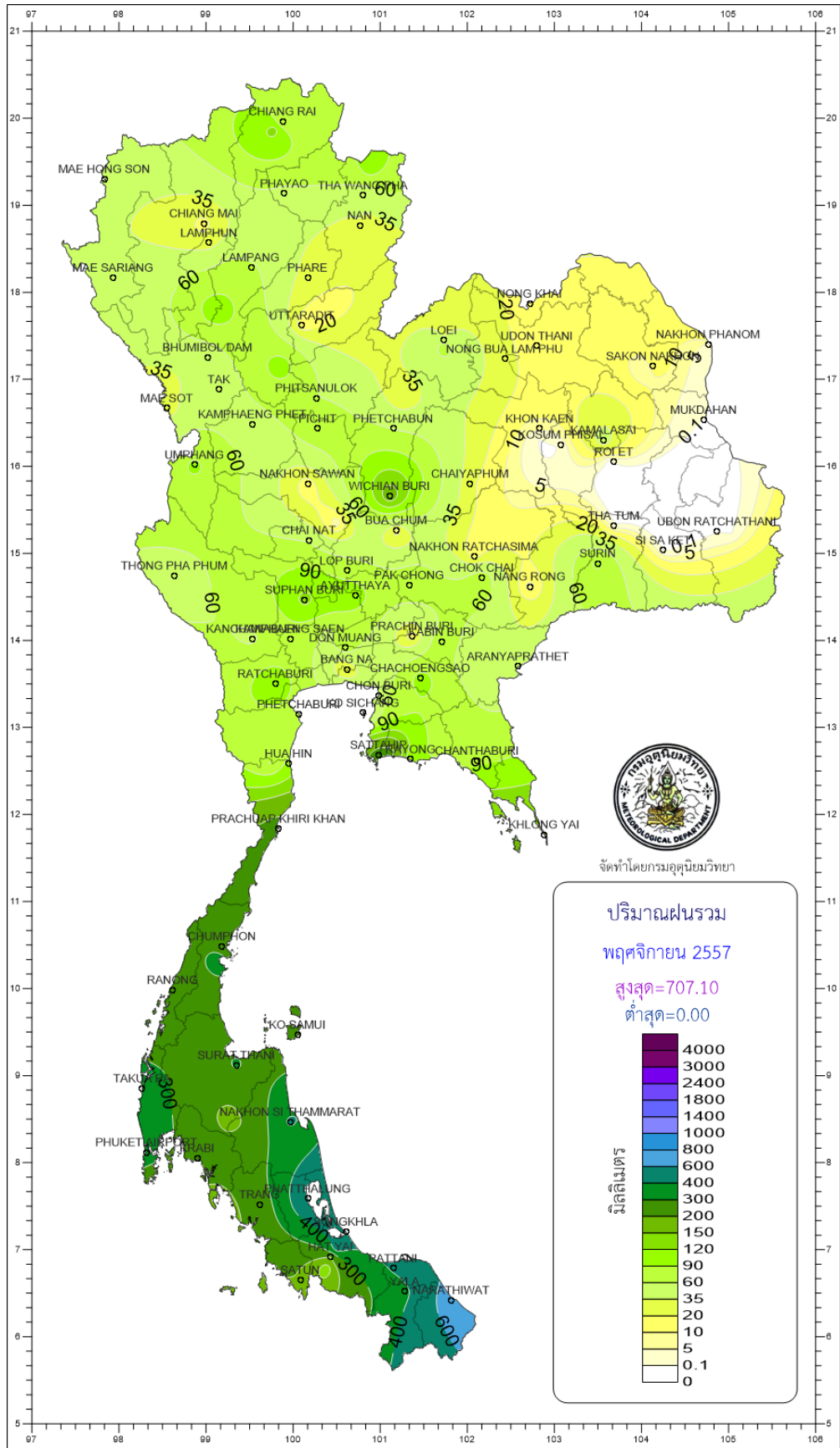
Southern Thailand, east coast

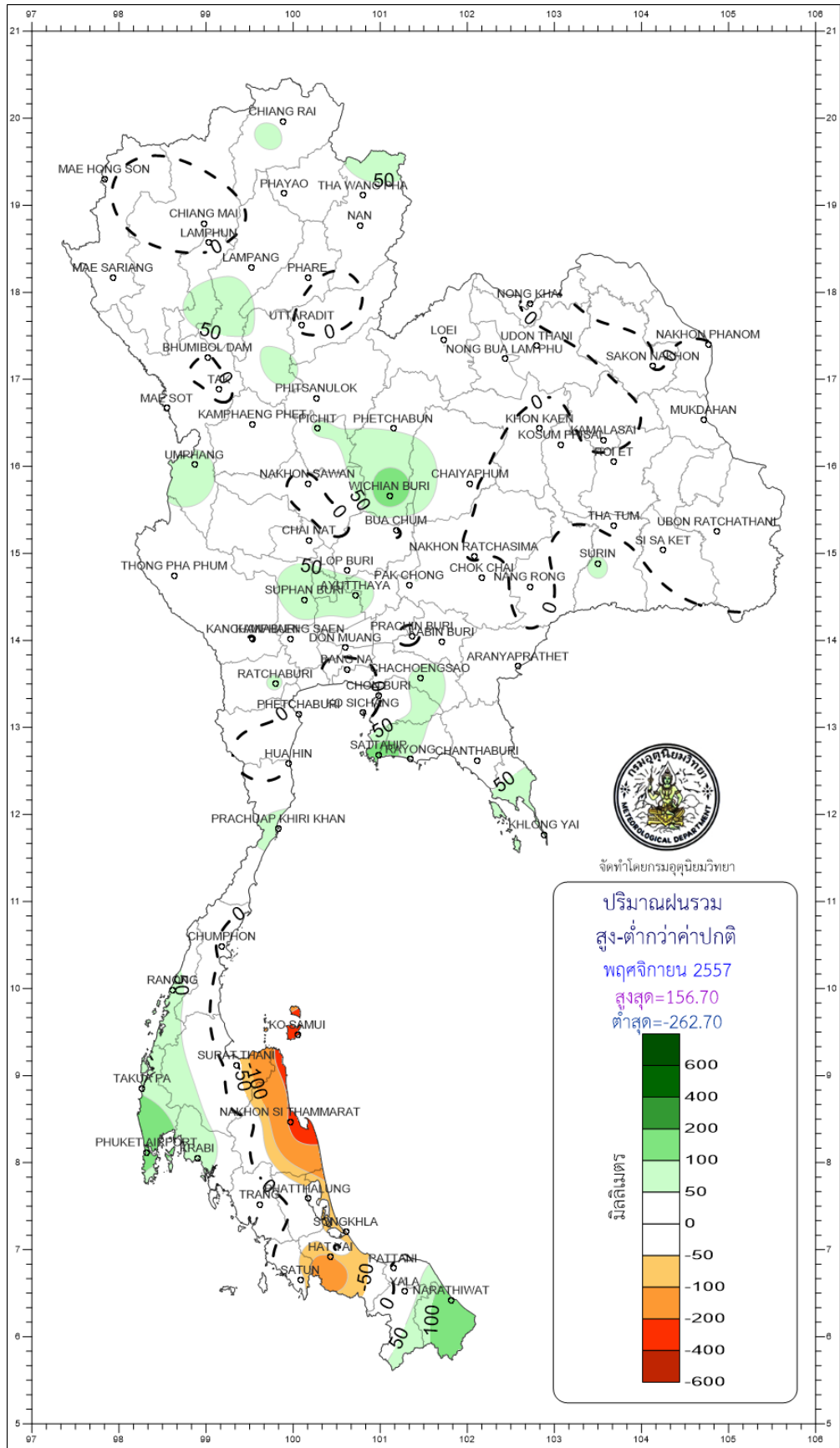
Station	Temperature ( °c)		Rainfall (mm)		Accumulative rainfall (mm Since 1 January	
	Mean	Above or below normal	Actual	Above or below normal	Actual	Above or below normal
Phetchaburi	28.3	1.4	75.3	-18.5	904.4	-71.3
Hua Hin	28.2	1.3	99.2	-2.0	599.9	-347.3
Prachuap Khiri Khar	27.8	1.2	228.7	74.2	936.8	-140.0
Chumphon	27.0	1.0	277.1	-10.8	1569.6	-179.8
Surat Thani	26.8	0.9	306.3	-23.6	1293.8	-198.8
Ko Samui	27.6	0.8	243.9	-262.7	1151.5	-598.3
Nakhon Si Thammarat	26.7	0.6	418.6	-212.6	1679.2	-365.6
Songkhla	27.3	0.4	426.6	-119.3	1345.2	-276.8
Hat Yai Airport	26.3	0.3	201.6	-115.5	1068.1	-390.5
Pattani Airport	26.7	0.4	414.5	7.9	1548.8	62.0
Narathiwat	26.4	0.1	707.1	152.2	1887.9	-7.2
Over the area	27.2	0.8	309.0	-48.2 -13%	1271.4	-228.6 -15%

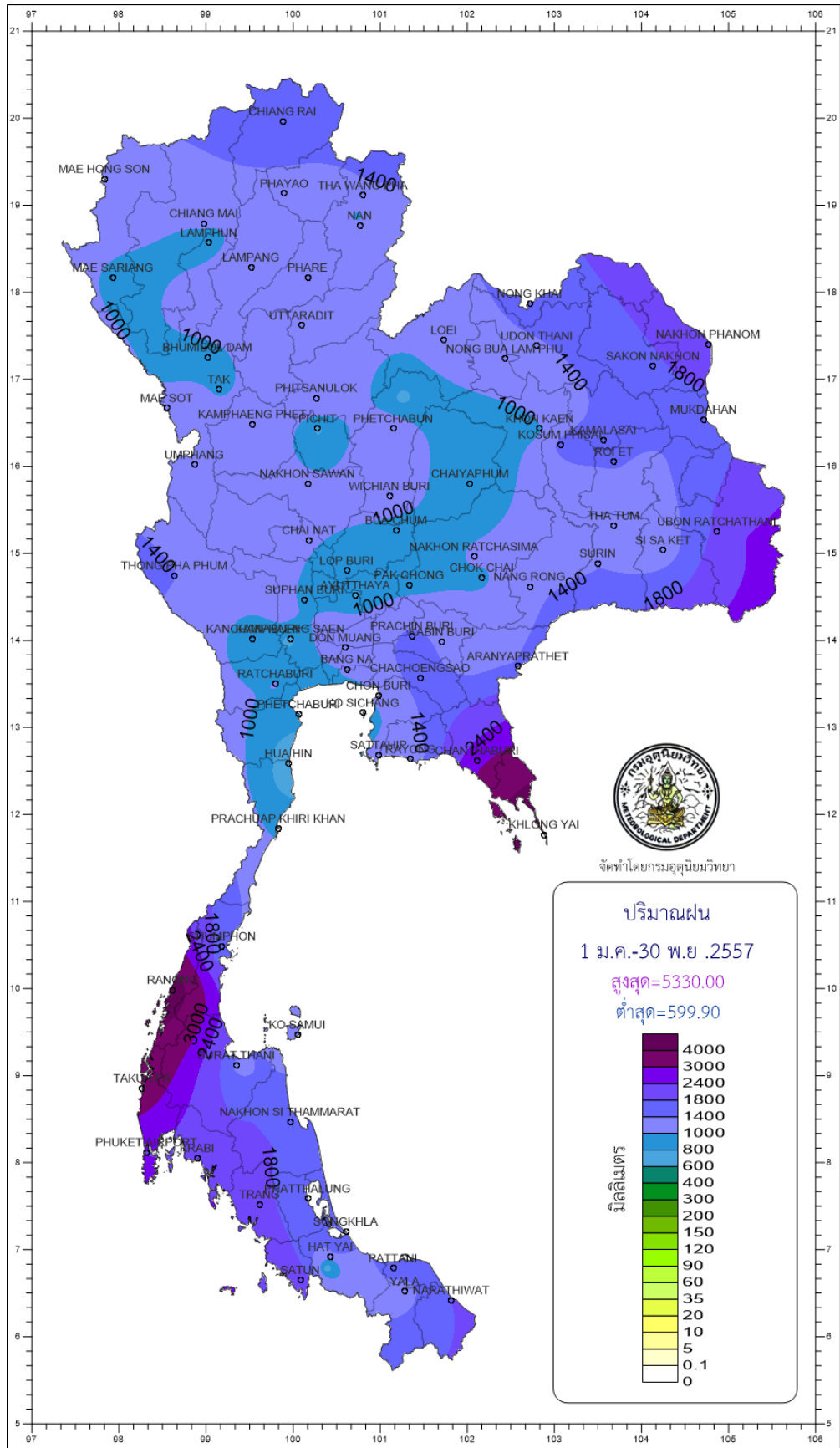
Southern Thailand, west coast

Station	Temperature ( °c)		Rainfall (mm)		Accumulative rainfall (mm Since 1 January	
	Mean	Above or below normal	Actual	Above or below normal	Actual	Above or below normal
Ranong	27.1	0.6	220.2	67.9	4753.3	730.4
Takua Pa	27.0	0.5	332.9	92.0	3504.2	-91.7
Phuket	28.2	0.6	256.2	78.8	2532.8	385.7
Phuket Airport	27.6	0.7	364.5	156.7	2385.6	-22.0
Ko Lanta	27.3	0.2	166.6	19.5	2432.8	311.8
Trang Airport	26.6	0.2	240.7	36.8	1986.8	-36.3
Satun	27.3	0.4	196.4	-27.5	2233.8	40.8
Over the area	27.3	0.5	253.9	60.6 31%	2832.8	188.5 7%

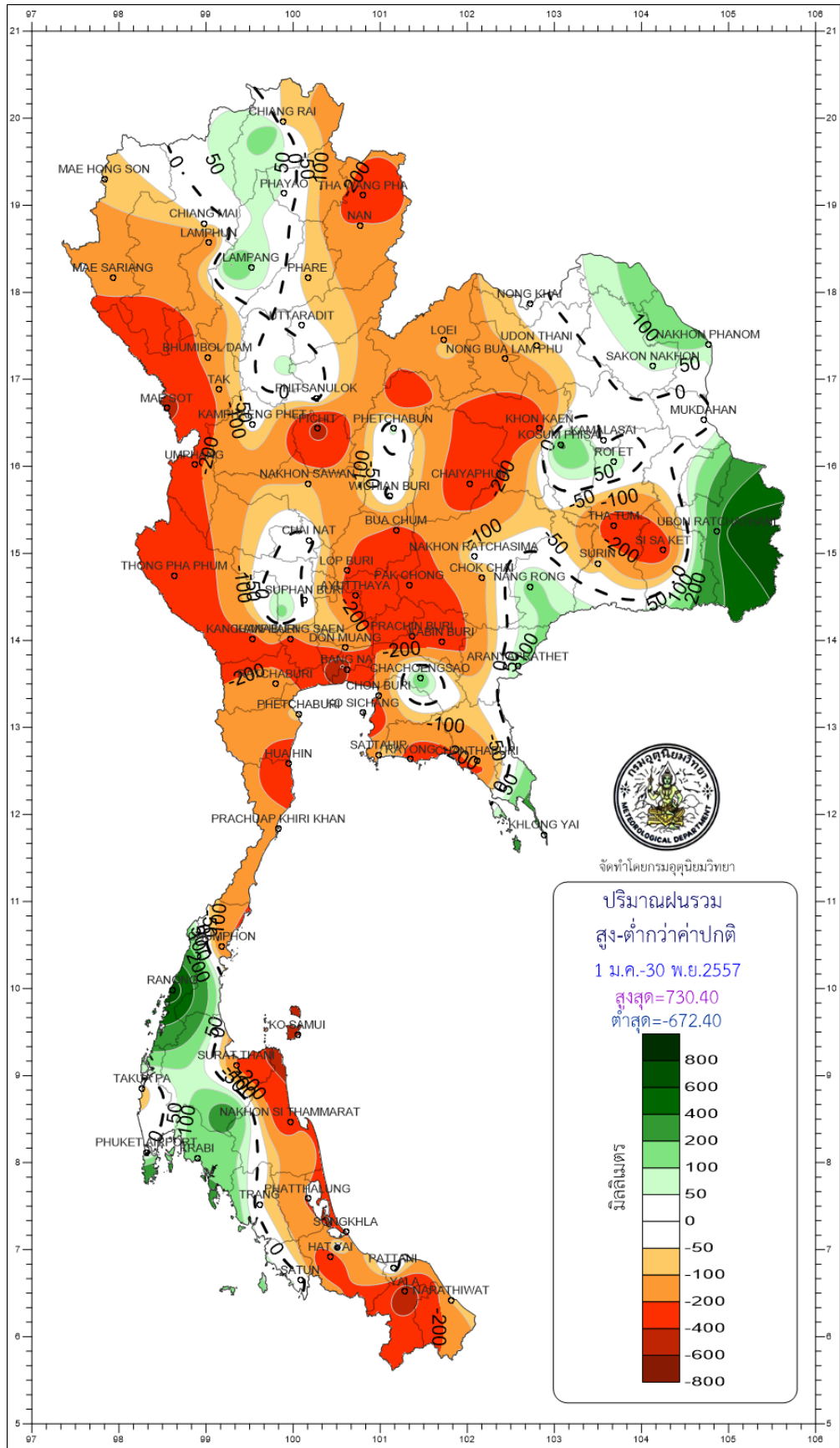
- NOTES :
- 1) Mean temperature is the average of daily dry-bulb temperature
  - 2) "T" is trace, rainfall amount less than 0.1 mm.
  - 3) "blank" is incomplete data.
  - 4) Temperature and rainfall are preliminary data.

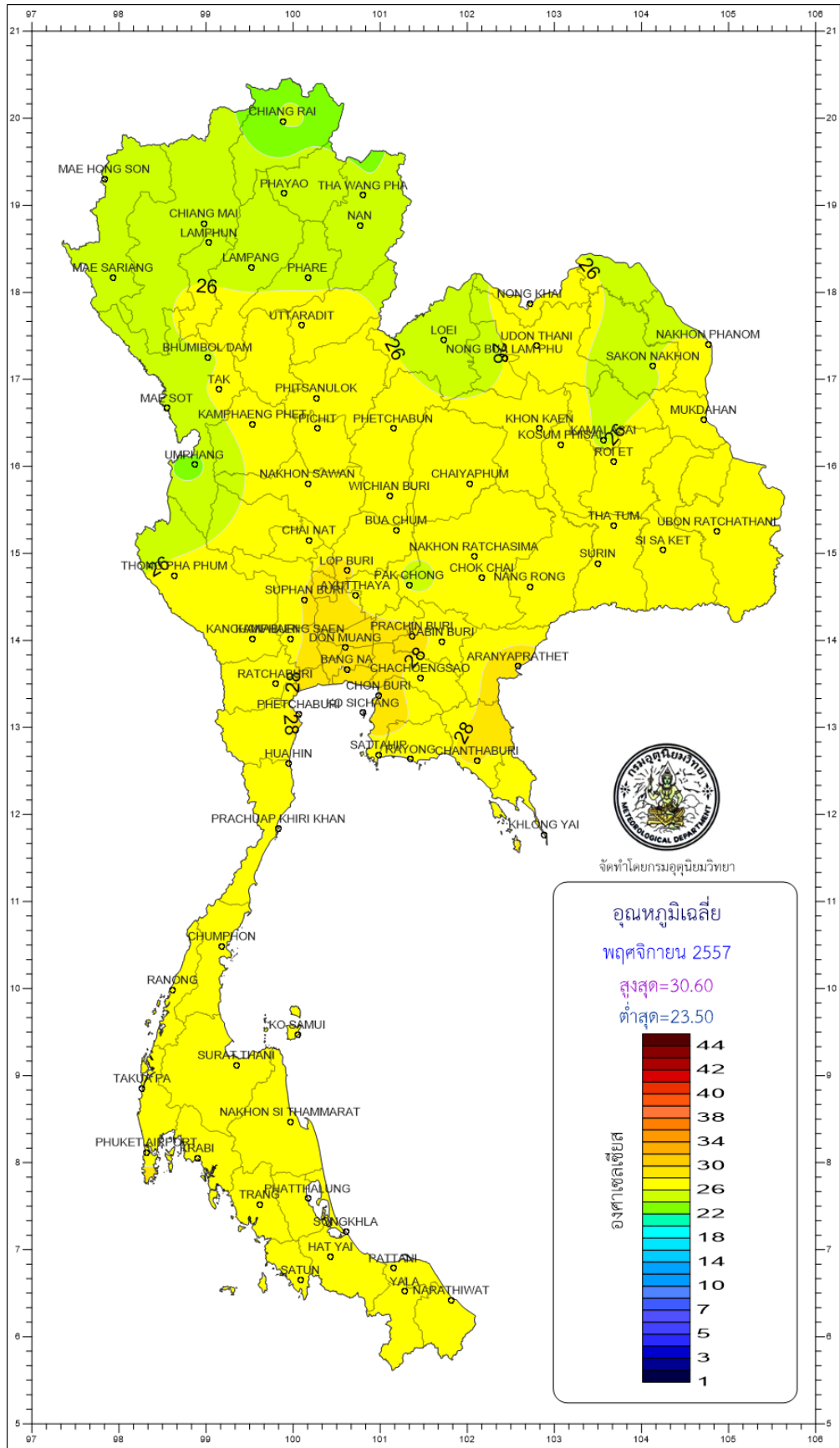


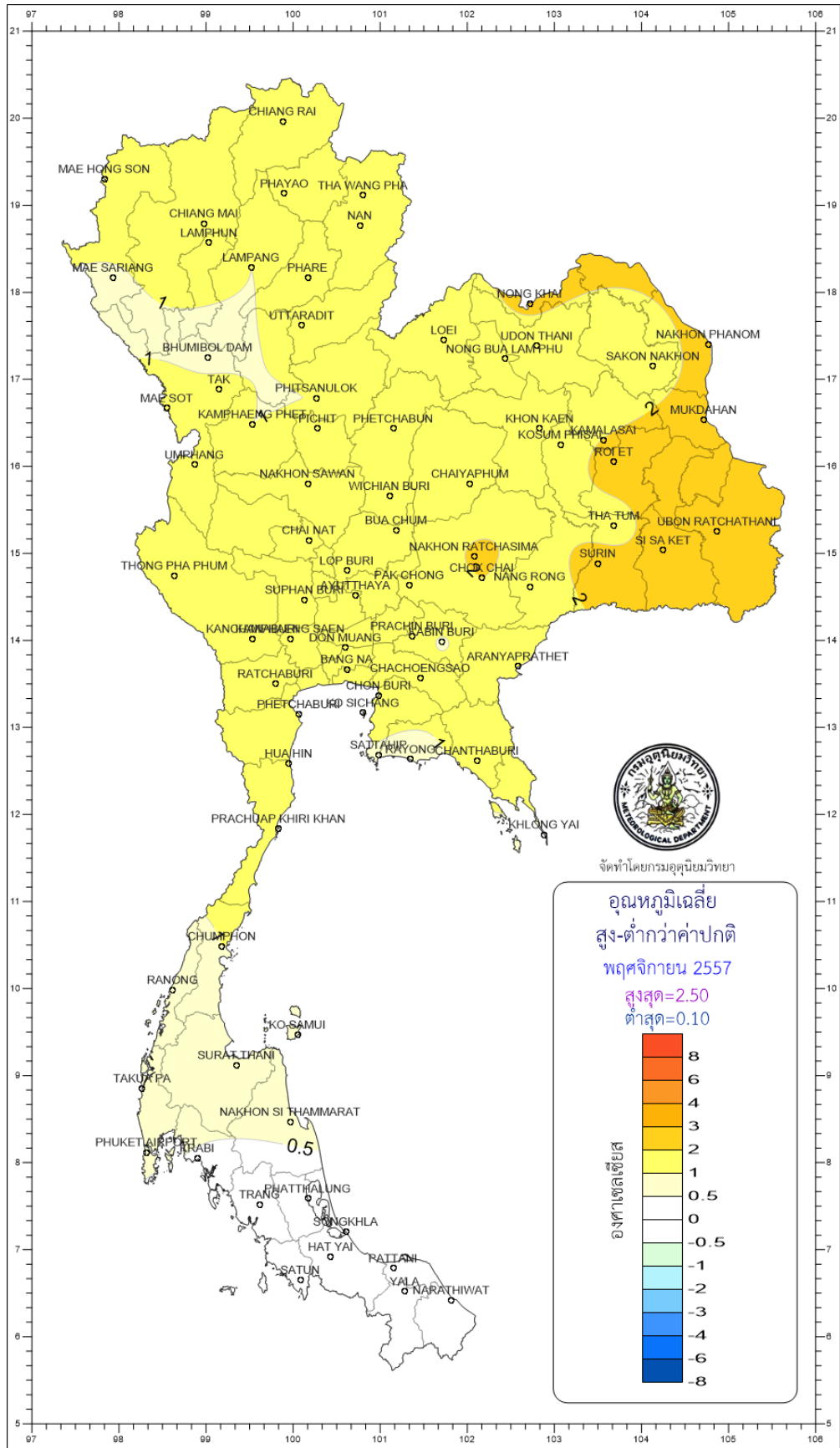










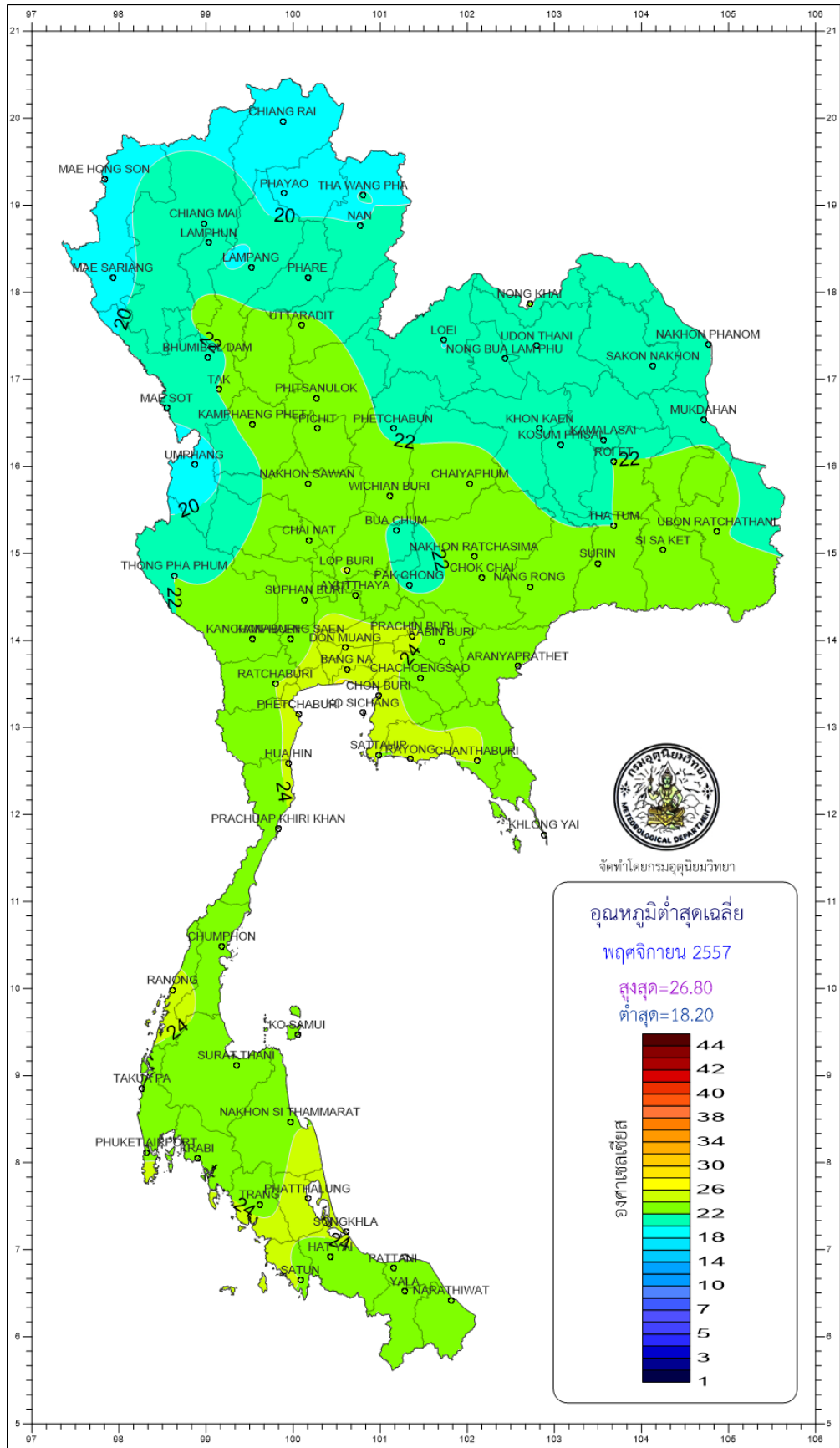


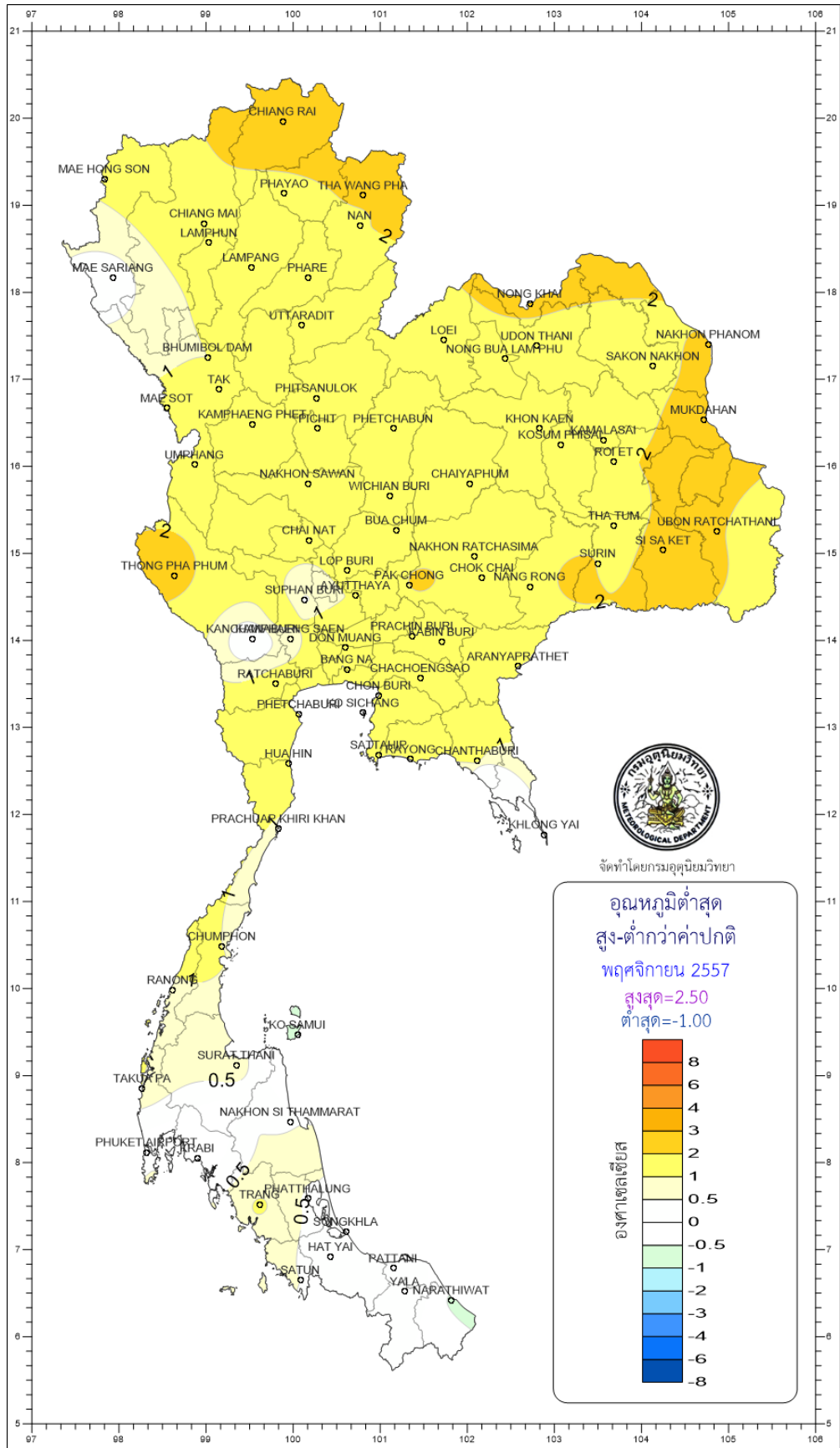
จัดทำโดยกรมอุตุนิยมวิทยา

อุณหภูมิเฉลี่ย  
สูง-ต่ำกว่าค่าปกติ  
พฤศจิกายน 2557  
สูงสุด=2.50  
ต่ำสุด=0.10

8
6
4
3
2
1
0.5
0
-0.5
-1
-2
-3
-4
-6
-8

องศาเซลเซียส





จัดทำโดยกรมอุตุนิยมวิทยา

